



WATERVILLE **OPERA** HOUSE



Irving Berlin's

WHITE CHRISTMAS

THE MUSICAL



SPONSORED BY

Madame Marie Cormier, Allen Insurance,
Maine Savings Federal Credit Union,
Back Office Solutions, Opa, and Lockwood Hotel

November 14, 15, 21, 28, 29, 2025 at 7:30pm

November 16 ~~6~~g, 22, 23, 30, 2025 at 2pm

207.873.7000

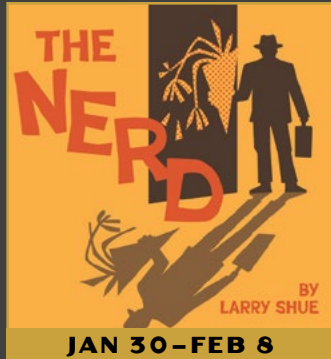
operahouse.org



WATERVILLE OPERA HOUSE

2026 THEATRICAL SEASON

2026 SEASON PASS NOW AVAILABLE!
RECEIVE A 20% DISCOUNT
WHEN YOU PURCHASE TICKETS TO ALL FOUR SHOWS.



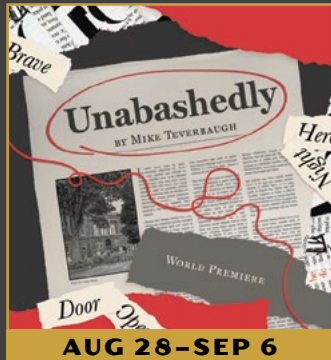
JAN 30 - FEB 8

THE NERD
BY
LARRY SHUE



APR 24 - MAY 3

**ONCE UPON
A MATTRESS**



AUG 28 - SEP 6

UNABASHEDLY
BY
MIKE TEVERBAUGH



NOV 13 - 29

**FAMILY WINTER
MUSICAL (TBA!)**



OPERAHOUSE.ORG
207 873 7000



Irving Berlin's WHITE CHRISTMAS THE MUSICAL

Based Upon the Paramount Pictures Film

WRITTEN FOR THE SCREEN BY
Norman Krasna, Norman Panama and Melvin Frank

MUSIC AND LYRICS BY
Irving Berlin

BOOK BY
David Ives and Paul Blake

ORIGINAL STAGE
PRODUCTION DIRECTED BY
Walter Robbie

ORCHESTRATIONS
BY
Larry Blank

VOCAL AND DANCE
ARRANGEMENTS BY
Bruce Pomahac

Presented by arrangement with Concord Theatricals
concordtheatricals.com

DIRECTOR – Debra Susi

MUSICAL DIRECTOR – Michael Peterson

SCENIC DESIGN – Sophia Tepermeister

COSTUME DESIGN – Travis M. Grant

LIGHTING DESIGN – Joshua Karp

SOUND DESIGN – Elise DeSeifer

CO-CHOREOGRAPHY – Ariel Grenier + Scott Stevens

PROPS DESIGN – Nathan Sylvester

STAGE MANAGER – Lexi Sheridan

ASSISTANT STAGE MANAGER – Krystal Guckin

SPONSORED BY

**Madame Marie Cormier, Allen Insurance,
Maine Savings Federal Credit Union,
Back Office Solutions, Opa, and Lockwood Hotel**



CAST OF CHARACTERS

Bob Wallace Christopher Dostie
 Phil Davis Tony Gerow
 Betty Haynes Jessica Haviland
 Judy Haynes Alicia Gaudet
 General Henry Waverly David Meyer
 Martha Watson Kay Renee Warren
 Susan Waverly Evelyn Meyer (November 14, 16, 22, 28, 30)
 Madeleine Whitfield (November 15, 21, 23, 29)
 Ralph Sheldrake Ben Fisher
 Rhoda Hannah Comfort
 Rita Mollie Sharples
 Mike Nolte Paul Herard
 Secretary/US for Betty and Judy/Ensemble Kiersten Christy
 Tessie/Ensemble Hannah King
 Jimmy/Quintet/Ensemble Jeffrey Fairfield
 Cigarette Girl/Asst. Seamstress/Ensemble Zoe Derosby
 Mr. Snoring Man/Quintet/Ensemble Greg Wiers
 Mrs. Snoring Man/Quintet/Ensemble Dawn Wiers
 Train Conductor/Ensemble Keith Davis
 Dance Captain/Ensemble Michael Gilbert
 Seamstress/Quintet/Ensemble Katie Libold
 Ed Sullivan Announcer/Ensemble Richard Meng
 Quintet/Ensemble Lindsay Hammes
 Ensemble Ariel Grenier, Karl Koroski,
 Annie Norris, Crystal Oliver, Ethan Sargent
 Tap Ensemble Michelle Casavant, Cami Dubois,
 Stephanie LaVerdiere, Jordan Stolt, Ally Turlo

SPECIAL THANKS
MCI Technical Theatre Class



PRODUCTION TEAM

Technical Director Juniper Purinton
 Production Manager Bryant Cyr
 Production Assistant Nathan Sylvester
 Light Board Operator Lexi Sheridan
 Sound Board Operator Elise DeSeifer
 Master Carpenter Ben Fisher
 Scenic Painter Ally Turlo
 Backstage Crew Vanessa Glazier, Levi Johnson,
 Charles Stubenrod
 Spotlight Operators Brady Dyer, Jackson Leonard

ORCHESTRA PIT MUSICIANS

Conductor/Musical Director Michael Peterson
 Keyboard 1/Rehearsal Accompanist Cindy Sambrano
 Keyboard 2 Theo Van Deventer
 Reed 1 Blaise Spath
 Reed 2 Brendan Hickey
 Reed 3 Jim Brogan
 Trumpet 1 Andy Forster + Peter Stuart
 Trumpet 2 Blake Peachey
 Trombone Amanda Bloss
 Bass Andy Buckland
 Percussion Theros Smith
 Drums Kyle Agbuya

This production is presented with one 15-minute intermission.
 The videotaping or audio and/or visual recording of this production is a
 violation of United States Copyright Law and an actionable federal offense.

MUSICAL NUMBERS

Act I

Happy Holiday	Bob, Phil, Sheldrake
White Christmas	Bob, Phil, Sheldrake, Ensemble
Happy Holiday/Let Yourself Go	Bob, Phil, Ensemble
Love and the Weather	Bob, Betty
Sisters	Betty, Judy
The Best Things Happen While You're Dancing	Phil, Judy, Quintet
Snow	Phil, Judy, Bob, Betty, Mr. and Mrs. Snoring Man, Ensemble
What Can You Do with a General?	Martha, Bob, Phil
Let Me Sing and I'm Happy	Martha
Count Your Blessings Instead of Sheep	Bob, Betty
Blue Skies	Bob, Ensemble

Act II

I Love a Piano	Phil, Judy, Ensemble
Falling Out of Love Can Be Fun	Martha, Betty, Judy
Sisters (Reprise)	Bob, Phil
Love, You Didn't Do Right by Me/How Deep is the Ocean	Betty, Bob
The Old Man	Bob, Ensemble
Let Me Sing and I'm Happy (Reprise)	Susan
How Deep is the Ocean (Reprise)	Betty, Bob
The Old Man (Reprise)	Bob, Phil, Sheldrake, Ensemble
White Christmas	Company
I've Got My Love to Keep Me Warm	Company

ABOUT THE CAST + CREW



Michelle Pratt Casavant (Tap Ensemble) is returning for her second show at WOH; her last role was a member of the dance ensemble for *Rock of Ages*. With 37 years of dance experience, Michelle has spent decades dancing on the beautiful WOH stage. She teaches tap, jazz, hip hop and Musical Theatre at Kennebec Dance Center in Augusta. She is also a full-time realtor for Summit Real Estate. As a board member for Waterville Creates, Michelle loves serving the community and supporting the arts. "Thank you to my family and friends for your support!"

Kiersten Christy (Secretary/US for Betty and Judy/Ensemble) is a Waterville native, but this is her first Opera House production! At WSHS, she was in the chorus of *The Music Man*, and Elle Woods in their production of *Legally Blonde*. She attended USM's Osher School of Music, studying classical singing with Ellen Chickering. Recently, she performed with Opera Maine in their productions of *Aida*, *La Bohème*, and *Sweeney Todd*. She moved back to Central Maine in July and opened Studio Christy, a music studio in Hallowell teaching voice and piano.

Hannah Comfort (Rhoda) is jazzed to bring Rhoda to life in *White Christmas*! She's especially excited to share the stage with dear friends, including her own "such devoted sister," Crystal Oliver. A lifelong dancer with over 20 years at Studio One, this marks Hannah's third Opera House production, following *Matilda* and *The SpongeBob Musical*. She hopes this show reminds audiences of the holiday spirit: love, togetherness, and peace on Earth. Enjoy!

Keith Davis (Train Conductor/Ensemble) fell in love with acting when he was just eight years old. He is honored to return to the stage after having been mainly behind the scenes for the past 20 years teaching performing arts for The Salvation Army. A proud former member of CAST, the Creative Arts Service Team, Keith is grateful for the opportunity to perform again and wishes to send heartfelt gratitude to his amazing wife and children for their support in helping to make this possible.

Zoe Derosby (Cigarette Girl/Assistant Seamstress/Ensemble) is elated to be making her WOH debut in *White Christmas*! Zoe is a 25-year-old dancer, performer, choreographer, and dance educator from Waterville. She has been dancing for over 20 years, having trained in tap, jazz, contemporary, ballet, musical theatre, and jazz funk. She graduated with a BA in Dance from Dean College in 2022, and in 2024 she became a member of Maine Dance Company. Zoe loves helping her students find their joy in the performing arts, and she hopes you enjoy this show!



Elise DeSeifer (Sound Designer) has worked with Waterville Opera House for the past three musicals, *Matilda*, *SpongeBob*, and *Head Over Heels*. She previously worked as Sound Designer and Audio Assistant with Opera House Theatre Company in Wilmington, NC. She would also like to thank her spouse and their three cats—Zorro, Bagheera, and Timber—for all of their love and support.

Christopher Dostie (Bob Wallace) has been performing in theatre and musicals since the age of eight. He first took the stage as an adult as Rooster in *Annie* with Community Little Theatre and is thrilled to be returning in *White Christmas* with such an incredibly talented group of individuals. When he's not rehearsing or humming show tunes, Christopher enjoys playing the piano and choreographing fireworks shows to music. He's thankful to his family and friends for their constant encouragement and support.


Jeffrey Fairfield (Jimmy/Quintet/Ensemble) is honored to return to the Waterville Opera House stage for the fifth time! His previous roles with WOH include Matthews in *Elf*, Lonny Barnett in *Rock of Ages*, The Pilot in *The Little Mermaid*, and the Park Keeper in *Mary Poppins*. By day, Jeff works in the Growing Tree program at Winthrop Grade School. Jeff wants to thank his friends, family, and this wonderful cast and crew for the opportunity!

Benjamin Fisher (Ralph Sheldrake) is enjoying his third performance at the Waterville Opera House. His previous roles were Patrick Star in *The SpongeBob Musical*, and Agatha Trunchbull in *Matilda*. He is honored to share the stage with such a talented community and production team but is especially excited to share the stage with his wife, Mollie, for the first time. Ben would like to dedicate his performance to Dr. Linda Brennan.

Alicia Stokes Gaudet (Judy Haynes) is thrilled to be back on the WOH stage after a long hiatus! Past credits include *West Side Story*, *Footloose*, and *Legally Blonde*. Alicia trained at Kennebec Dance Centre in Augusta and has performed in countless dance productions over the years. Alicia is a graduate of Cony High School and Boston College and currently resides in Augusta with her husband and daughters. Outside of work at Sprague & Curtis Real Estate, Alicia volunteers with the Augusta Colonial Theater and St. Michael School.

Tony Gerow (Phil Davis) is delighted to return to the WOH stage! A Bangor native, He currently works at Husson University. Tony's diverse career includes touring with The Young Americans as well as Feld Entertainment on the stunt show *Marvel Universe Live*. WOH Designer credits include *Miss Holmes*, *A Fox on the Fairway*, and *Almost, Maine*. Penobscot Theater Design credits include *Clarkston*, *Birthday Candles*, and *Dirty Deeds Downeast*. Tony is grateful for the endless love and support of his family.

**HAPPY
HOLIDAYS!**

Allen 
Insurance | Financial
100% EMPLOYEE-OWNED

51 Main St., Waterville
AllenIF.com
873-5101

OPA

It's all Greek to me.

139 Main St - Waterville, ME

207-859-3103



Michael Gilbert (Dance Captain/Ensemble) is once again delighted to be back on the WOH stage. He was last seen as Rudolpho in last spring's production of *Matilda*. Mike has been in a handful of other WOH shows over the years that include *Joseph*, *The Full Monty*, *Annie*, and *Newsies*. He is happy to join this year's cast of *White Christmas*. As a dancer, Mike also performs at WOH with Studio One for Dancers. Mike is thankful for the continued support from his family, friends, and his partner, Scott.

Ariel Grenier (Choreographer/Ensemble) is the owner and artistic director at Between Friends Art Center, Home of Next Generation Theatre and Dance Studio in Brewer, Maine. She studied Psychology, Early Development, and Dance at the University of Maine. She is a Board Member for Maine Dance Teachers Club and has been a dance and theatre educator for over a decade, locally as well as in the UK and Ireland. Ariel's performance credits include the US premiere of *Fame Forever* and many WOH musicals over the years. Her recent choreography credits include *Head Over Heels* and *Matilda* as well as countless productions at local stages. When she is not working with the next generation, you'll catch her globe-trotting with her pup, Ollivander Hamilton. "Special thank you to WOH and my family for their continued support."

Krystal Guckin (Assistant Stage Manager) is excited to take a new and exciting role in this production as Assistant Stage Manager. She previously assisted with the backstage crew for *Murder on the Orient Express* and *Head Over Heels*. She has previously been on stage in *Elf*, *Miss Holmes Returns*, and *The SpongeBob Musical*. Krystal would like to express thanks to her husband, Richard, and children for their love and support in making this dream a reality.

Lindsay Hammes (Quintet/Ensemble) is thrilled to be back on the WOH stage for her first musical in over two decades as a part of the *White Christmas* quintet and ensemble. You may remember her as Deirdre in *The Cottage* and Sally in *Drinking Habits*. Back in the day, she played roles including Oliver in *Oliver!*, Ado Annie in *Oklahoma!*, and many more besides, including in shows that didn't have a "!" in their title. In her free time, Lindsay likes to travel, learn to fly planes, sip bourbon or wine, and pamper her cat, Furbie.

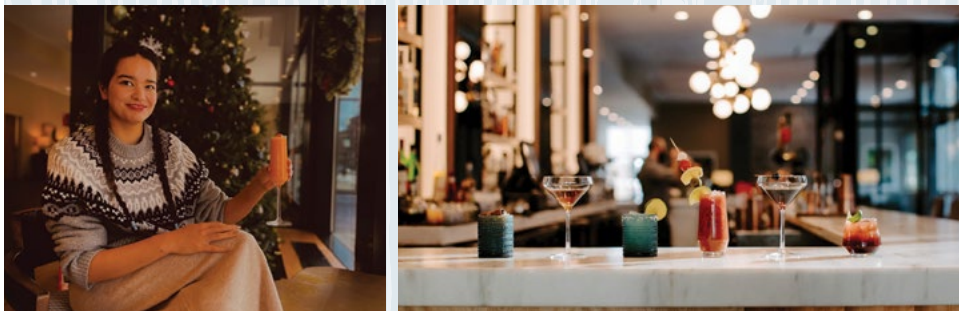
Jessica Haviland (Betty Haynes) is ecstatic to be part of this production! She was last seen on the Opera House stage as Miss Honey in *Matilda*. Some other credits include Ensemble in *The SpongeBob Musical*, Ensemble in *Head over Heels*, Emily Hobbs in *Elf*, Elsa in *The Sound of Music*, Betsy Foster in *Tuck Everlasting*, Katherine Plummer in *Newsies*, Glinda in *The Wizard of Oz*, and Irene Molloy in *Hello Dolly!*. Thanks to the WOH production team, fellow cast members, and crew for this beautiful show! Sit back and enjoy!!

FRONT / MAIN

PROUD SPONSOR OF
**IRVING BERLIN'S
WHITE CHRISTMAS
THE MUSICAL**

SIP, SAVOR, AND STAY MERRY

Keep the holiday spirit going after the show with festive cocktails and our new lineup of seasonal desserts - the perfect encore.



LOCATED INSIDE
LOCKWOOD
HOTEL

9 MAIN STREET, WATERVILLE, ME | 207-660-0130
FRONTANDMAINWATERVILLE.COM | @FRONTANDMAINWATERVILLE
PROUDLY MANAGED BY CHARLESTOWNE HOTELS



Paul Herard (Mike Nulty) is honored to play the part of Mike Nulty in *White Christmas*! This marks his 17th production at WOH. Some of his past productions include *Matilda the Musical* (Sergei), *The Producers* (Ens./ Little Wooden Boy), and *Rock of Ages* (Dennis Dupree). In real life, Paul is a realtor and member of The Pine Tree Group at EXP Realty. His favorite hobby is walking right down the middle of Main Street USA in the Magic Kingdom with his family. Paul wishes everyone a joyful and peaceful holiday season!

Josh Karp (Lighting Designer) is a New Jersey-based lighting designer and is glad to be back at the Waterville Opera House. Recent design credits include *Matilda*, *Spring Awakening*, *The SpongeBob Musical*, *Newsies*, and *Shrek the Musical*. @joshuakarpdesigns

Hannah King (Tessie/Ensemble) is excited to be on stage at WOH for the sixth time! She is grateful to be able to sing so many beautiful old songs with such an incredible cast. In her spare time, she enjoys ice skating and cuddling with her cats and dog.

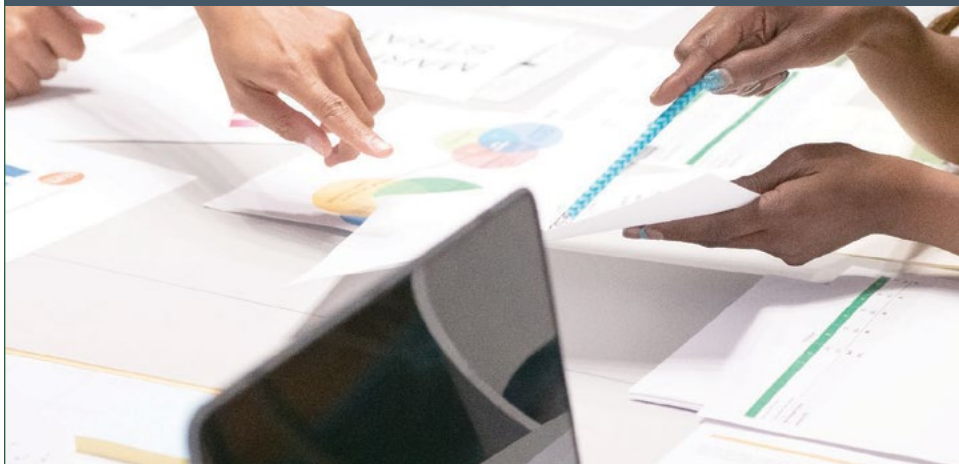
Stephanie LaVerdiere (Tap Ensemble) is honored to return to the stage where her love of dance began nearly 40 years ago. A teacher at three studios, she loves sharing her passion with her students. She's also a proud mom to a wonderful daughter and two adored dogs. Stephanie is grateful to perform again and wishes everyone a happy holiday season!

Katie Libold (Seamstress/Quintet/Ensemble) is thrilled to be returning to the Waterville Opera House for her 18th production! Some of her favorite roles at WOH include Justice Charlier in *Rock of Ages*, Mayzie La Bird in *Seussical*, Lily St. Regis in *Annie*, and Elizabeth Benning in *Young Frankenstein*. Tons of love and thanks to the fabulous cast and production crew. Katie dedicates her ensemble part as the Seamstress to her Grandma, who was the seamstress at her college. Forever love to Keith, Ahsoka, and Vader!

David Meyer (General Waverly) is excited to return to the WOH stage after playing Walter in *Elf* and Herr Zeller in *The Sound of Music*. He wants to thank his wife and daughters for persuading him to take his love of performing arts on stage, his parents for introducing him to theatre, his sister, Jennifer, for singing show tunes together ever since childhood, and the amazing Waterville Opera House creative community for making this such a welcoming space.

Evelyn Meyer (Susan Waverly) is thrilled to be part of *White Christmas*. This is Evelyn's fourth show at WOH. You may have seen her in *Matilda*, *Elf*, or *The Sound of Music*. Evelyn also likes to play classical guitar, French horn, dance, play games with her family, crochet, and knit. Evelyn wants to thank her mom and sister, Agatha, for supporting her, her dad for being in the show with her and keeping her laughing, and her family, teachers, and classmates for cheering her on!

SIMPLIFY YOUR BACK OFFICE



WE KNOW WHAT IT'S LIKE TO RUN A SMALL BUSINESS

We also know that the more time you spend on administrative tasks means the less time you have to focus on generating income and growing your business. Let Back Office Solutions Maine be your right hand. We provide business solutions and bookkeeping services throughout the state of Maine.

BACK OFFICE SOLUTIONS MAINE

part of the Bessey Family of Companies

(207) 453-9388 | backofficesolutionsme.com



Annie Norris (Ensemble) is elated to return to the WOH stage! She last appeared here as a nun in the 2022 production of *The Sound of Music*. Other acting credits include Milky White in *Into the Woods* (SRP), Ms. DePinna in *You Can't Take It with You* (SRP), and Minstrel/Ensemble in *Something Rotten* (Lakewood). If not on stage, she can often be found behind the scenes making costumes for local community and school theater. Annie would like to thank her family and friends for all their support. Enjoy the show!

Crystal Oliver (Ensemble) is thrilled to return to the stage as a dancer in *White Christmas*. She has been dancing at the Waterville Opera House for 25 years with Studio One for Dancers, where she currently teaches Advanced Tap. Crystal has choreographed and performed for Waterville High School and the University of New Hampshire. She wants to thank her mentors who have helped her along the way, and dedicates her performance to her daughter, Vivienne, who makes every day feel like Christmas morning.

Michael Peterson (Music Director) Mike has had the honor of MD-ing many shows at WOH over the years, including *Man of La Mancha*, *Joseph*, *Into the Woods*, *Jesus Christ Superstar*, *The Full Monty*, *Elf*, and more. He has performed in the quartet for *The Music Man*, and as Sparky in *Forever Plaid*. Additionally, Mike has been a guest artist at Colby College, and performs with the Downeast Brass Quintet and The Maine Idea barbershop quartet. Mike teaches instrumental music grades 6–12 in Oakland. He lives in Oakland with his wife Amy, who also teaches music!

Ethan Sargent (Ensemble) Happy holidays! Ethan is ecstatic to be in his fourth Waterville Opera House musical, especially this production, his favorite Christmas movie and dream show to perform in. Previously at WOH, Ethan was ensemble in *Elf*, *Head Over Heels*, and *The SpongeBob Musical*. Over the past year, he also featured in *Waiting for Godot* with Aqua City Actor's Theatre, *A Midsummer Night's Dream* with Lights Up Productions in Skowhegan, and, most recently, *Dead as a Dormouse*, the latest murder mystery installation in the *Nosh and Knock Off* series at the Waterville Public Library, written and directed by the fabulous Emilienne Ouellette. He hopes you enjoy this production and feel the Christmas cheer!

Mollie Sharples (Rita) is delighted to end her stage hiatus with Irving Berlin's *White Christmas*! A WOH veteran from her youth and recent Assistant Choreographer for Roald Dahl's *Matilda the Musical*, she thanks her family, her husband, Ben (who has never stopped encouraging her, and with whom she is thrilled to share the stage!!), and her mom for always reminding her that "the best things happen while you're dancing."



MOVIES, CLASSES, CONCERTS, PLAYS + MORE!

The Youth Arts Access Fund supports free or pay-what-you-can admission for youth ages 18 and under!



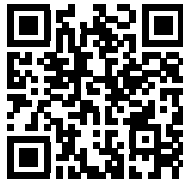
93 Main Street, Waterville, Maine 04901 watervillecreates.org

ACCESS THE FUND:

All programs are eligible. Stop by the Ed Harris Box Office or call 207.873.7000

SUPPORT THE FUND:

Scan this code.



Lexi Sheridan (Stage Manager) is thrilled to be joining WOH for her third production here as Stage Manager (*The SpongeBob Musical*, *Deathtrap*). Lexi has always had a huge passion for musical theatre and getting to assist cast and crew as SM is her jam. With a desire to create magic backstage, Lexi loves all the moving parts of being Stage Manager. She is so proud of this cast and is thrilled for you to see their hard work pay off in this heartwarming show. She hopes you enjoy it as much as she enjoyed working on it!

Scott Stevens (Co-Choreographer) is the owner of Studio One for Dancers in Oakland, presently in its 45th season. Scott has choreographed numerous productions over the years and recently retired in 2022 as choreographer for WHS's fall productions after 22 years with his dear friend, Gayle. He started performing on the WOH stage in 1977 and since then has had 43 annual productions. It's been a pleasure sharing this experience with his partner, Mike. To the cast of *White Christmas... Break a Leg! Dancingly*, Mr. Scott.

Jordan Stolt (Tap Ensemble) has been tapping her heart out since the age of two! She began dancing with Scott Stevens and went on to study with Bossov Ballet, Kennebec Dance Centre, and at the University of Maine, earning a minor in dance. Jordan has danced with Mr. Scott nearly every year since childhood. She lives in Hallowell with her partner, Eric, their two boys, Teddy and Edwin, and dog, Bailey. A local business owner, she's thrilled to make her stage debut in *White Christmas!*

Debra C. Susi (Director) is a 39-year Theatre Educator, Costume Designer, and Intimacy Choreographer whose artistic and educational mission has been "Building Community Through the Arts—one story at a time." Directing credits include the U.S. premiere of *Fame Forever—Reunion and Rebirth*, sequel to the musical *Fame*. Professional costume design credits at The Public include *Morning After Grace*, *Women in Jeopardy*, and *Screwball Comedy*. Debra has also worked as a Guest Instructor at Colby College.

Sophia Tepermeister (Scenic Designer) is a Helen Hayes nominated scenic designer based in New York City. Previous work includes *She Loves Me* (University of Maryland), *Petite Rouge: A Cajun Red Riding Hood* (Imagination Stage), *Angels in America* (Penn State), and *Daughters of Leda* (American University). Originally from Boston, she earned an MFA in scenic design from the University of Maryland. sophiatepermeisterdesign.com

GOING BEYOND BANKING

Maine Savings goes beyond what's expected by finding new ways to offer superior financial services.

WWW.MAINESAVINGS.COM



Nakesha “Kay” Warren (Martha) is excited to be a part of this wonderful cast. She’s directed CLT’s *The Wiz*, *Addams Family*, *The Crucible*, *Music Man*, and *Urinetown*. This is her third production with Waterville Opera House. Some of her favorite roles were Hubert in *Nunsense*, MotorMouth in *Hairspray*, The Witch in *Into the Woods*, Deloris in *Sister Act*, Mrs. Muller in *Doubt*, and Gary Coleman in *Avenue Q*. She has graced the stage as Miss Hannigan in *Annie* and Medda Larkin in *Newsies* at Waterville Opera House.

Madeleine Whitfield (Susan Waverly) is 13 and an eighth grader making her Waterville Opera House debut. Her favorite roles include Ellie in *Freaky Friday*, Regina in *Mean Girls*, and a Fate in *Hadestown*. She loves singing, dancing, and dreams of Broadway. Madeleine thanks her parents, Kathy Brown, Ms. Reed, Mr. Peterson, Paxton, and Barbra Streisand.

Dawn Wiers (Mrs. Snoring Man/Quintet/Ensemble) has been part of the central Maine community theater family for 15 years, appearing in 12 productions. Her favorite roles are those in any production in which she shares the stage with her husband, Greg, her real-life Mr. Snoring Man! She couldn’t do this without him, nor does she want to! Thank you for coming! Please enjoy the show!

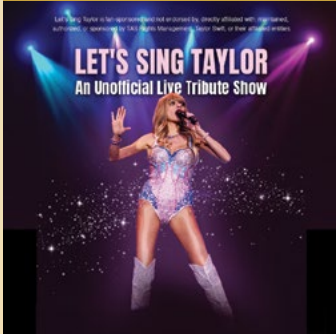
Greg Wiers (Mr. Snoring Man/Ezekiel/Quintet/Ensemble) is taking the stage for his 10th production at the WOH, and his second time sleeping on the stage. He’s kept his bio short to keep you from nodding off and hopes you enjoy the show.



WATERVILLE OPERA HOUSE

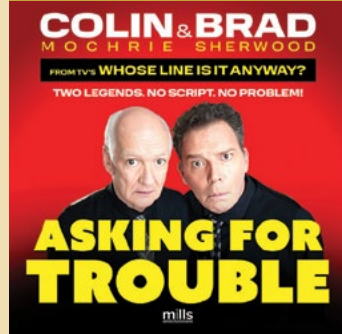
UPCOMING PERFORMANCES

DEC 5



LET'S SING TAYLOR

DEC 6



COLIN & BRAD

DEC 15



**CHRISTMAS
WITH THE CELTS**

DEC 20



**GLENN MILLER
ORCHESTRA**

For the full schedule of events, please visit our website.



OPERAHOUSE.ORG
207 873 7000

