

WELCOME

Welcome to the Paul J. Schupf Art Center, home of Waterville Creates and the diverse film, visual, and performing arts programming presented through its divisions, the Maine Film Center, Ticonic Gallery + Studios and the Waterville Opera House. The Colby College Museum of Art's Joan Dignam Schmaltz Gallery of Art is also located on the first floor.

HOURS OF OPERATION

Ed Harris Box Office: Open daily, 11am–7pm*
Galleries: Open daily, 11–7pm.
Closed Tuesdays and federal holidays.
*Hours may vary for special events

FOOD + CONCESSIONS

Bixby Chocolate Café, serving Maine-made chocolates and treats, fresh-roasted coffee, pastries, specialty toasts, and more.
Open daily, 11am–6pm. Closed Tuesdays.
Theater Concessions, offering beer, wine, popcorn, and assorted candies + snacks.

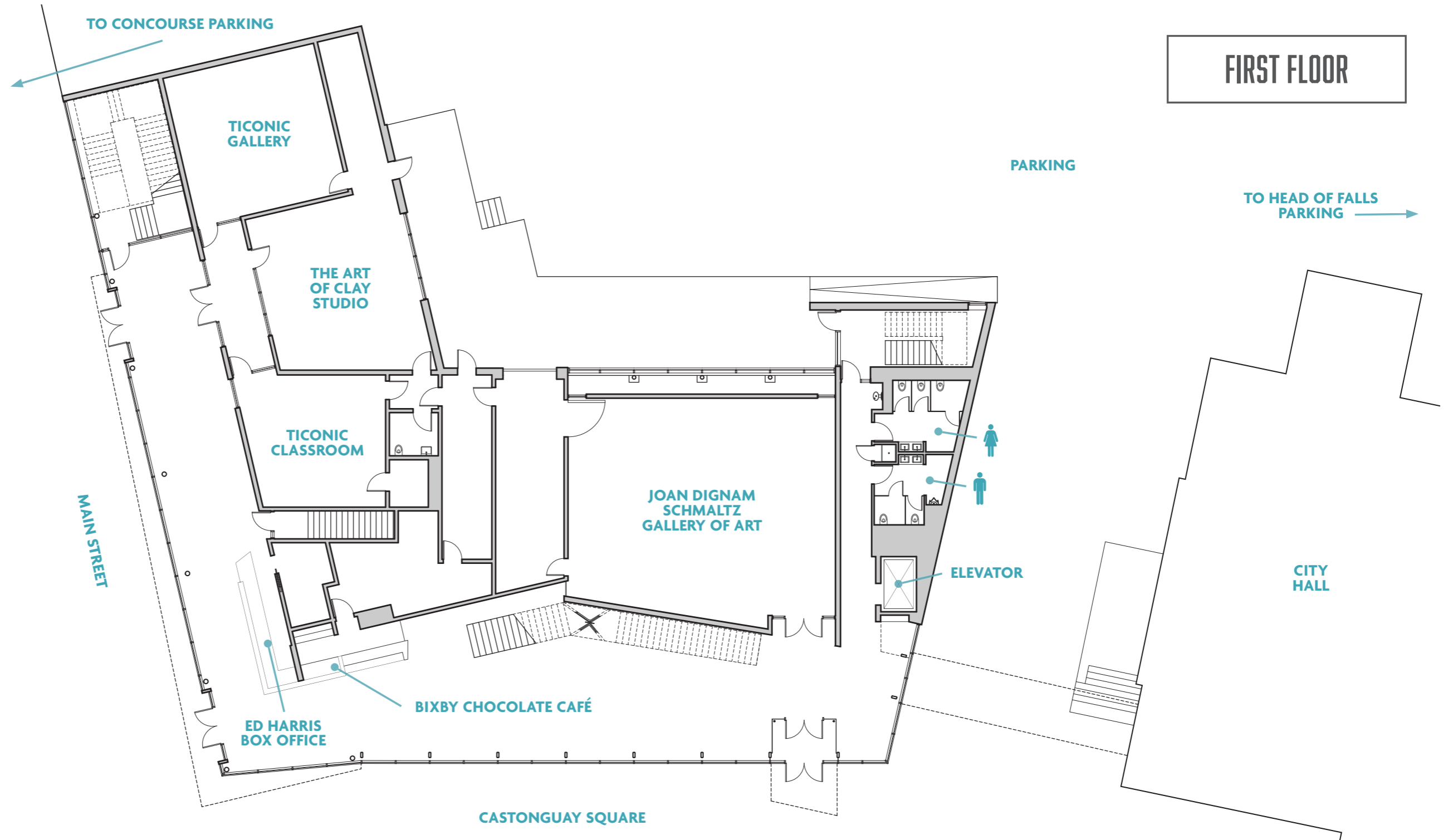
CODE OF CONDUCT

We are committed to ensuring that the Paul J. Schupf Art Center is a safe and welcoming place for all. We expect our visitors, volunteers, and staff to recognize and honor one another with dignity and respect. We have no tolerance for any acts of harassment or harmful behavior.

ACCESSIBILITY

All street-level entrances to the Paul J. Schupf Art Center are wheelchair accessible. The second-floor screening rooms and sky bridge to the Waterville Opera House are accessible by elevator, located on the first floor. Wheelchairs are available at the Box Office. Designated wheelchair seating is available in all three film screening rooms as well as the orchestra level of the Waterville Opera House. Assisted listening devices are available at the Maine Film Center and the Waterville Opera House.

For more information on accessibility or to request accommodations, please call 207.873.7000 or e-mail access@watervillecreates.org.



PAUL J. SCHUPF ART CENTER

VISITOR GUIDE

93 Main Street
Waterville, Maine 04901
207.873.7000

