

# IAN TRASK inspired MOBILE



## unEarth: an Installation by Ian Trask

On display through December 31  
at Common Street Arts

Waterville Creates! is accepting  
reservations to view Ian Trask's  
latest work, *unEarth*, on Wednesdays  
and Thursdays from 10 a.m. to 3 p.m.  
Visitors are required to wear a face  
covering for the entire visit while at  
the gallery.

To schedule a viewing, visit this link:  
[www.watervillecreates.org/common-street-arts/visit-the-gallery/](http://www.watervillecreates.org/common-street-arts/visit-the-gallery/)

As human-induced climate change continues to evolve, the impacts on the  
Earth's ecosystems are unfolding before our eyes. To reflect some of the  
human behaviors contributing to this widespread assault on the planet,  
artist Ian Trask presents a large-scale installation made entirely from  
reimagined consumer waste.

Trask is a Maine-based sculptor who received a degree in biology from  
Bowdoin College in 2005. After working many years in research labs he left  
the world of science to pursue a career in fine art. Trask chooses to create  
his art from discarded or otherwise unwanted material in the deliberate  
effort to let scarcity and access dictate the direction of his work.



### MATERIALS IN THE KIT

- 10- inch flat wooden disk
- 4 command strip hooks
- Embroidery thread of multiple colors
- Fishing line/mono-filament
- A bunch of recycled objects!
- Pencil and postcard



Make an Ian Trask inspired mobile! This project is  
best for ages 7+. Kids will likely need adult help  
with the tricky parts: tying the fishing line and  
balancing the mobile.

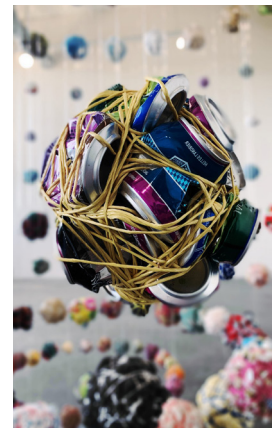
### GENERAL DIRECTIONS

**1.** Create three balls or "spores" for the  
mobile by wrapping  
the recycled objects  
in embroidery thread.  
Wrap the thread  
around and around  
the objects to hold  
them firmly in place.



Use some of the objects  
in the kit and at least one  
item of trash or recycling  
from your home. What  
can you make into art?  
See tips on the back.

**2.** Tie a length of fish-  
ing line to each ball you  
created. You'll hang the  
balls from a hook at the  
other end.



continued on back . . .

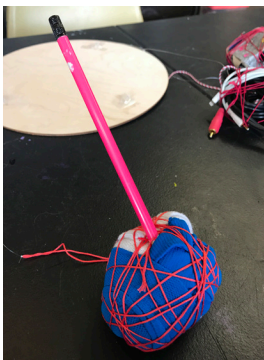
Try judging the relative weights of the balls you made. Are they equal in weight? Or are some much heavier? The heavy ones will need to hang near the center of the wood disk. You want the wood disk to be balanced.

**3.** On one side of the disk, make a light pencil mark where you want to hang each of the three balls. Adhere one hook to each mark and tie one ball to each hook, adjusting a bit for the weight as needed.

**4.** Add the final hook to the top of the disk, right in the center, and tie a string to it for hanging.

#### A FEW TIPS

- Try getting each "spore" or ball as round as possible.
- Use glue, like super glue, on the knots in the fishing line.
- Use a pencil to push the end of the thread into the ball once it is wrapped. This hides the string and keeps it neat.
- A clear plastic bag around some objects may make it easier to form the ball.
- Heavier balls or spores hang best near the center of the disk.
- Do not stick the hooks on until you think you have the weight right.



#### TIPS ON FINDING OBJECTS TO USE FOR THIS PROJECT

-unused toys you want to get rid of

-mismatched socks

-wires or cords that are not being used

-look in your recycling bin, as colorful cardboard is great to use

-scrap fabric

-things in the junk drawer that no one uses

-old art projects on paper that you don't want but also don't want to throw away



**Check out a video in Ian Trask's incredible studio space the week of October 26th on Common Street Art's Facebook page!**

*We'd love to see what you create!  
#artkitsforall  
#artathome  
Be bold in your creativity!*

**Art Kits for All** is a partnership project, designed to offer creative fun for people of all ages; these kits will be distributed at various times in different locations in the Waterville area. You'll find updates and many more resources at the websites/social media accounts for the Colby College Museum of Art ([www.colby.edu/museum](http://www.colby.edu/museum)) and Waterville Creates! ([www.watervillecreates.org](http://www.watervillecreates.org)).

**COLBY  
MUSEUM  
OF ART**

community + creativity  
**C S A**  
common street arts  
a program of Waterville Creates!

**Waterville Public Schools**  
Kennebec Montessori School  
Family Violence Project  
24-hour Hotline 1-877-890-7788